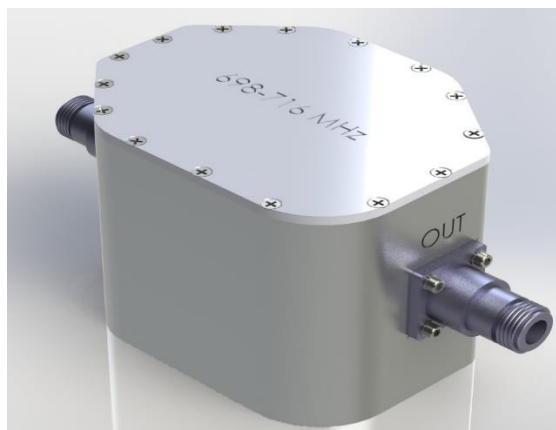


Product Specifications



CCRF-251

Filter, 698 – 716 MHz

Electrical Specifications

PASSBAND	698 – 716 MHz
PASSBAND INSERTION LOSS	3.0 dB Max.
PASSBAND RETURN LOSS	20 dB Min.
STOPBAND REJECTION	30 dB Min. \leq 696 MHz 30 dB Min. \geq 718 MHz
POWER HANDLING	1 W CW / Avg. Per Port 10 W Peak

Environmental Specifications

OPERATING TEMPERATURE	0° to +60°C Operating
ENVIRONMENTAL	Per ETS-300
WEATHERIZATION	Per IP-65

Mechanical Specifications

CONNECTORS	Type 'N' Female
SIZE	3.225 x 3.46 x 4.4" Excluding connectors.
WEIGHT	Approx. 3 lbs

Rev: 041218