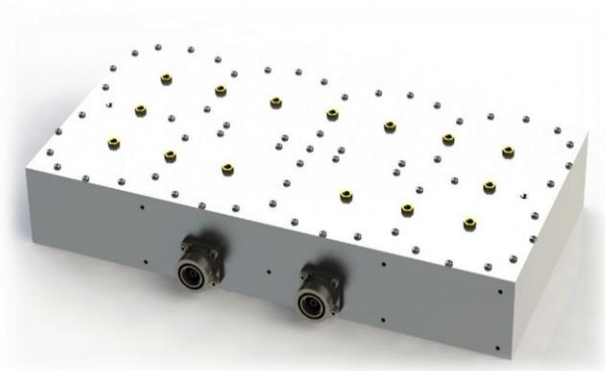


# Product Specification



## CCTF-101

**Filter, 850 A Band Transmit**  
**Extremely High-Powered Design**  
**High Rejection in Receive Bands**  
**Low Loss Design**

---

### Electrical Specifications

PASSBAND	869 – 891.5 MHz
PASSBAND INSERTION LOSS	1.0 dB Max.
INSERTION LOSS VARIATION	0.75 dB Max.
RETURN LOSS	18 dB Min.
REJECTION	
DC – 824 MHz	90 dB Min.
824 - 849 MHz	80 dB Min.
849 – 865 MHz	40 dB Min.
896 – 898 MHz	20 dB Min.
898 – 900 MHz	35 dB Min.
968 – 2000 MHz	40 dB Min.
2000 – 2500 MHz	40 dB Min.
POWER HANDLING	800 W Avg. / CW 12.5 kW Peak

Rev: 062719

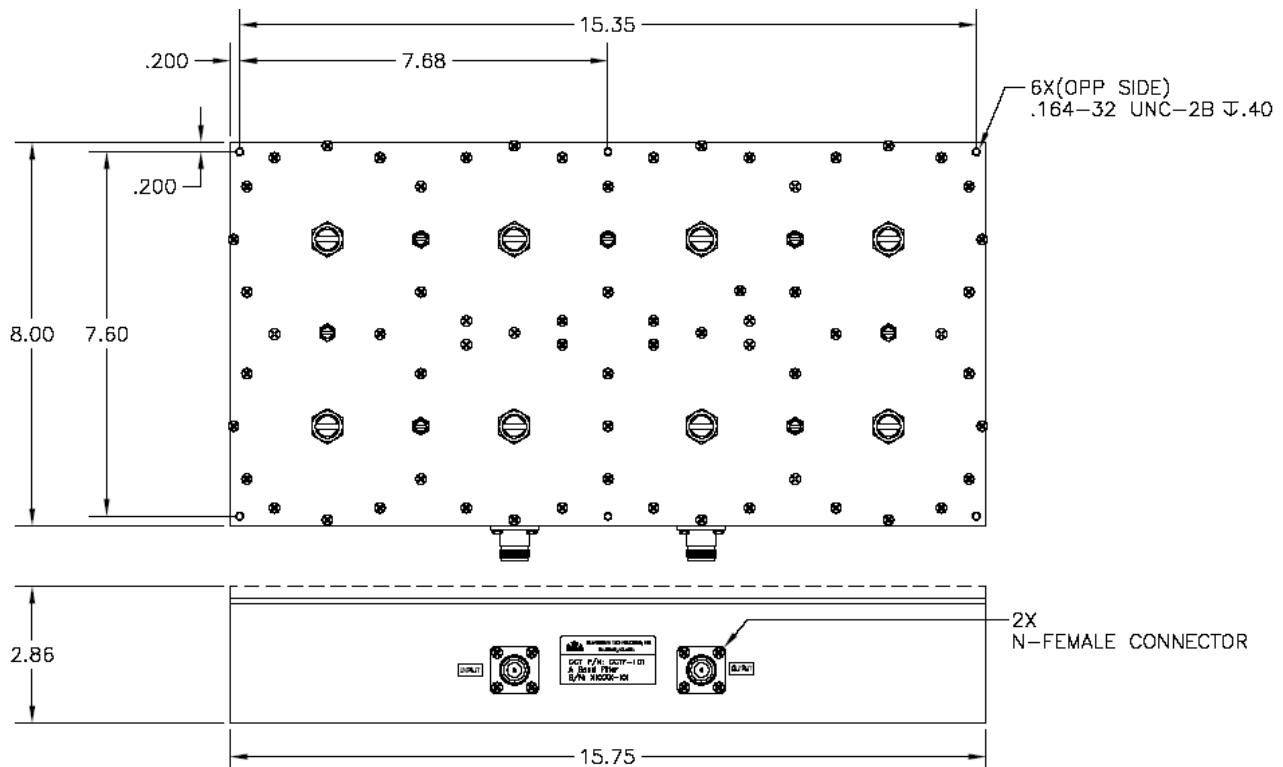
# Product Specification

## Environmental Specifications

OPERATING TEMPERATURE	-0° to +60°C Operating
ENVIRONMENTAL	Per ETS-300
WEATHERIZATION	Per IP-65
LIGHTENING PROTECTION	Per EN / IEC 61000 4-5, Level 4

## Mechanical Specifications

CONNECTORS	7/16 DIN Female Optional: Type 'N'
SIZE	15.8" x 8.0" x 2.9" (See Outline)
WEIGHT	Approx. 18 lbs.



**OUTLINE DRAWING**

Rev: 062719