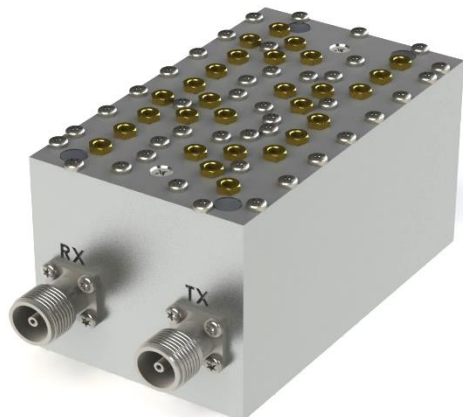


Product Specification



CCDP-589

Duplexer, 850 Band

Miniaturized Design

High Transmit Rejection in Receive Bands

Low Loss Design

Electrical Specifications

PASSBAND	
RECEIVE	824 - 849 MHz
TRANSMIT	869 – 894 MHz
PASSBAND INSERTION LOSS	1.2 dB Max.
INSERTION LOSS VARIATION	0.8 dB Max.
RETURN LOSS	18 dB Min.
ISOLATION	80 dB Min.
POWER HANDLING	50 W Avg. 500 W Peak

Environmental Specifications

OPERATING TEMPERATURE	-40° to +60°C Operating
ENVIRONMENTAL	Per ETS-300
WEATHERIZATION	Per IP-65 (IP-67 Optional)
LIGHTNING PROTECTION	Per EN / IEC 61000 4-5, Level 4

Rev: 062719

Product Specification

Mechanical Specifications

CONNECTORS

SMA Female

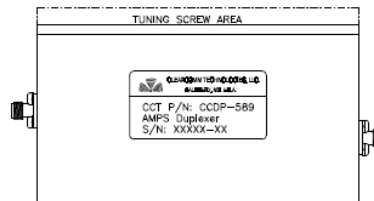
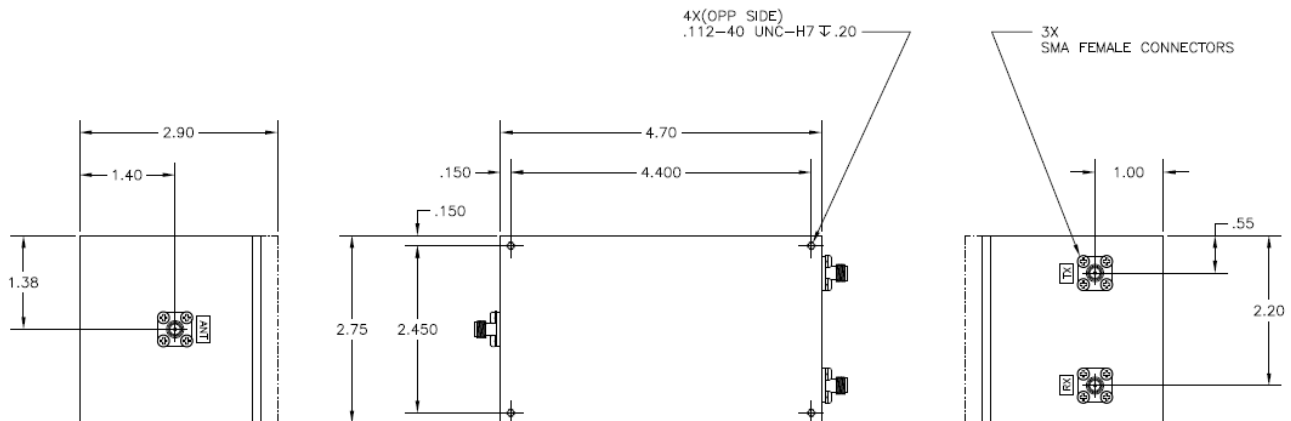
Optional: 4.3/10.0, Type 'N'

SIZE

4.7 x 2.9 x 2.9" (See Outline)

WEIGHT

Approx. 4 lbs.



OUTLINE DRAWING

Rev: 062719