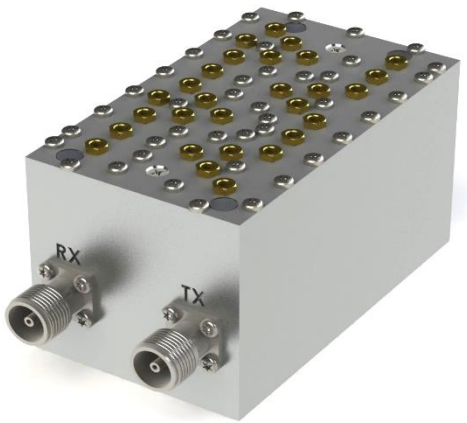


# Product Specification



**CCDP-553**  
**Duplexer, 1900 Band**  
**Miniaturized Design**  
**High Transmit Rejection in Receive Bands**  
**Low Loss Design**

---

## Electrical Specifications

PASSBAND	
RECEIVE	1850 - 1910 MHz
TRANSMIT	1930 - 1990 MHz
PASSBAND INSERTION LOSS	1.5 dB Max.
INSERTION LOSS VARIATION	1.0 dB Max.
RETURN LOSS	18 dB Min.
ISOLATION	
TRANSMIT TO RECEIVE	70 dB Min.
RECEIVE TO TRANSMIT	70 dB Min.
POWER HANDLING	50 W Avg. / 500 W Peak

---

## Environmental Specifications

OPERATING TEMPERATURE	-04° to +60°C Operating
ENVIRONMENTAL	Per ETS-300
WEATHERIZATION	Per IP-65 (IP-67 Optional)
LIGHTNING PROTECTION	Per EN / IEC 61000 4-5, Level 4

Rev: 073119

# Product Specification

## Mechanical Specifications

CONNECTORS

SMA Female

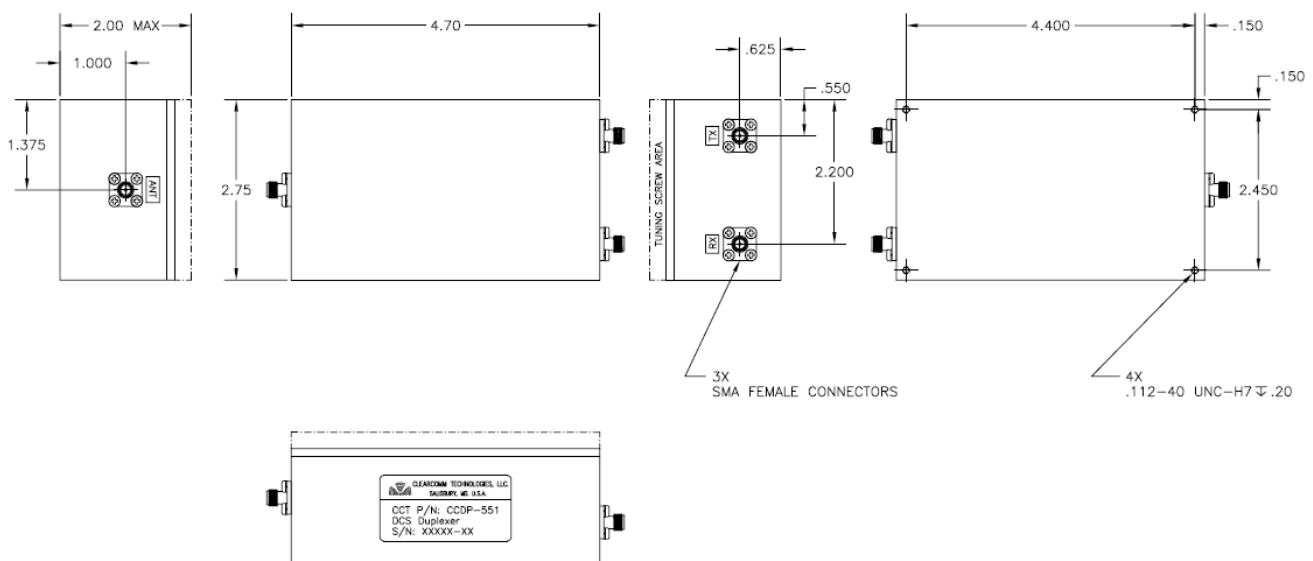
Optional: 4.3/10.0, Type 'N'

SIZE

4.7 x 2.9 x 2.9" Excluding Connectors

WEIGHT

Approx. 4 lbs.



## OUTLINE DRAWING

Rev: 073119