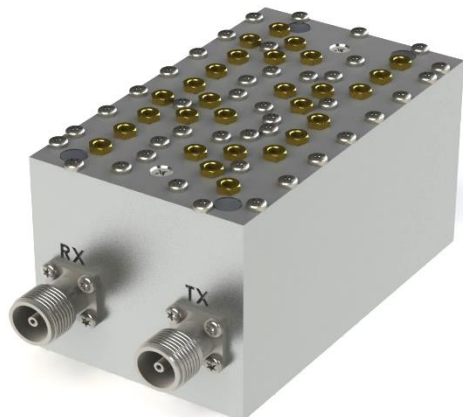


Product Specification



CCDP-551

Duplexer, 1800 Band

Miniaturized Design

High Transmit Rejection in Receive Bands

Low Loss Design

Electrical Specifications

PASSBAND

RECEIVE 1710 - 1755 MHz

TRANSMIT 1805 - 1880 MHz

PASSBAND INSERTION LOSS 1.5 dB Max.

INSERTION LOSS VARIATION 1.0 dB Max.

RETURN LOSS 18 dB Min.

ISOLATION

TRANSMIT TO RECEIVE 70 dB Min.

RECEIVE TO TRANSMIT 70 dB Min.

POWER HANDLING 50 W Avg. / 500 W Peak

Environmental Specifications

OPERATING TEMPERATURE -04° to +60°C Operating

ENVIRONMENTAL Per ETS-300

WEATHERIZATION Per IP-65 (IP-67 Optional)

LIGHTNING PROTECTION Per EN / IEC 61000 4-5, Level 4

Rev: 073119

Product Specification

Mechanical Specifications

CONNECTORS

SMA Female

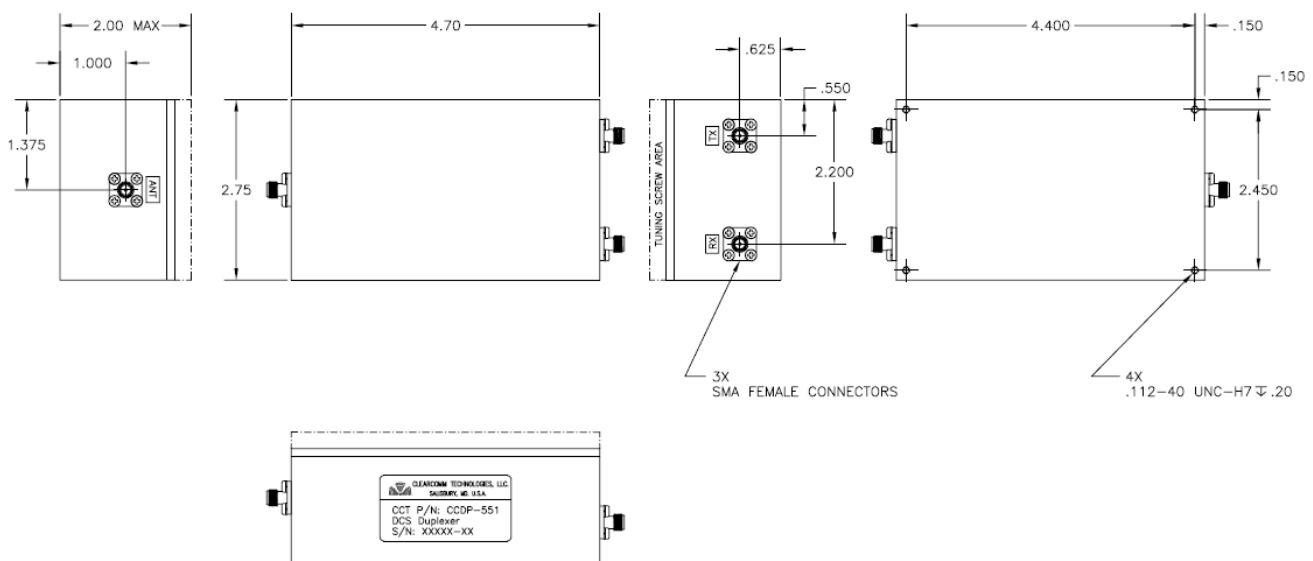
Optional: 4.3/10.0, Type 'N'

SIZE

4.7 x 2.9 x 2.9" Excluding Connectors

WEIGHT

Approx. 4 lbs.



OUTLINE DRAWING

Rev: 073119