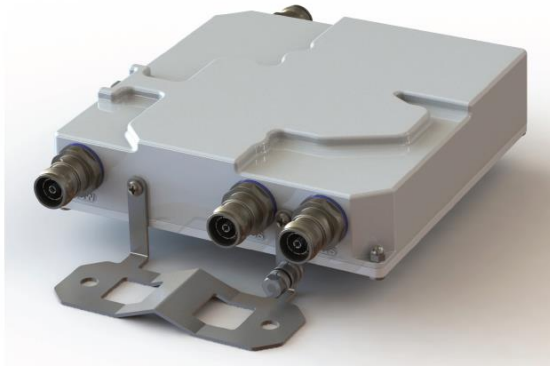


Product Specification



CCFA-834-XDW

Tri Band Combiner

- **Covers 600-850 / 1900 / AWS Bands**
- **Fully Weatherized**
- **Low Loss / High Isolation**
- **DC / ASIG Auto Sense**
- **Single, Dual or Quad Units Available**

Electrical Specifications			
Band 1 - LOW			
Passband	MHz	Min	555-894
Insertion Loss	dB	Max	0.20
Return Loss	dB	Min	22
Isolation to Bands 2 and 3	dB	Min	60
Average input power	W	Max	250
Input Peak Envelope Power	W	Max	3000
Band 2 - PCS			
Passband	MHz	Min	1850-1995
Insertion Loss	dB	Max	0.45
Return Loss	dB	Min	22
Isolation to Bands 1 and 3	dB	Min	60
Average input power	W	Max	250
Input Peak Envelope Power	W	Max	3000
Band 3 - AWS			
Passband	MHz	Min	1695-1780 and 2110-2200
Insertion Loss	dB	Max	0.45
Return Loss	dB	Min	22
Isolation to Bands 1 and 2	dB	Min	60
Average input power	W	Max	250
Input Peak Envelope Power	W	Max	3000
Intermod Products at all Ports with two +43dBm tones	dBc	Max	-156

Rev: 042619

Product Specification

Environmental Specifications			
Environmental rating			ETSI EN 300 019 class 4.1, RoHS
Ingress protection			IP67
Temperature range	°C		-40 to +65
Temperature range	°F		-40 to +149
Wind force @ 200 km/h (125 mph) front/side	lbf		16.2 / 4.2
Lightning protection all ports			RF port: ±10kA max (8/20us), IEC 61000-4-5
Altitude			3,000m max 10,000ft max
Mean Time Between Failures (MTBF)	Hrs	Min	>10 ⁶

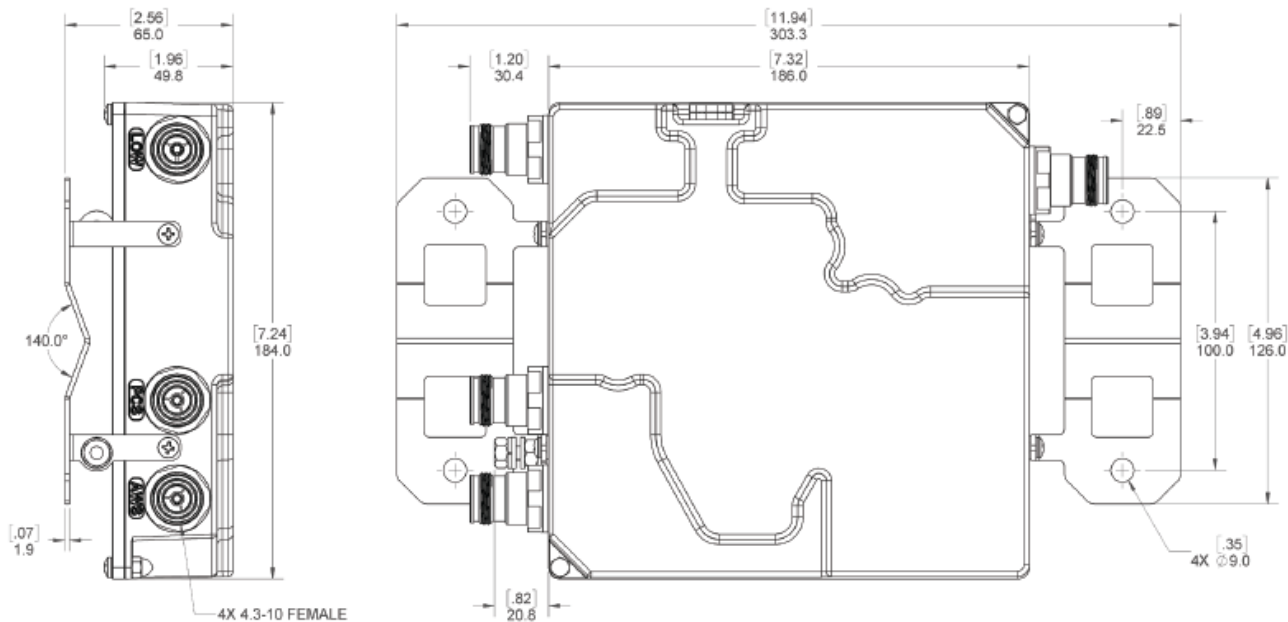
Electronic Specifications			
DC Sense and Routing Specifications			
Input voltage	DCV		8 to 35
DC current rating	amps	Max	1.5, current limited
Compatibility AISG			1.1 / 2.0
Combiner Function			
DC on any single port			DC-AISG connected to COM
DC on more than one port			P1: AWS, P2: LOW P3: PCS
Splitter Function			
DC on COM detected			DC-AISG routed to port with AISG device
Port priority for multiple devices			P1: AWS, P2: LOW P3: PCS

Mechanical Specifications	
Connectors RF	4.3-10 (F)
Ground stud	M6 x 1 (hex nut included)
Connectors Quantity	4
Dimensions excluding brackets & connectors L x W x H mm (in.)	186 x 184 x 47 (7.32 x 7.24 x 1.85)
Weight, KG, (lbs)	2.41 (5.3)
Mounting	Pole/wall bracket supplied including two metal clamps for 45-178 mm diameter poles

Rev: 042619



Product Specification



OUTLINE DRAWING

Rev: 042619