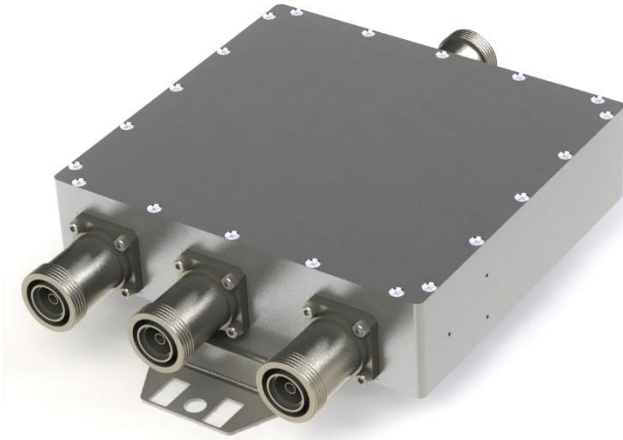


# Product Specification



## CCFA-675

### Multiband Combiner (Triplexer)

- Covers 700+850, 1900, AWS Bands
- Low Loss / High Isolation
- Low PIM Device
- Stackable

---

## Electrical Specifications

### FREQUENCY RANGE

COMMON PORT	698 – 2000 MHz
700+850 BAND PORT	698 – 894 MHz
1900 BAND PORT	1850 – 2000 MHz
AWS BAND PORT	1695 – 1780 MHz and 2110 – 2180MHz

### PASSBAND INSERTION LOSS

700+850 BAND	0.2 dB Max (0.15dB typical)
1900 BAND & AWS EXT BAND	0.4dB Max (0.35dB typical)

### PASSBAND RETURN LOSS

24 dB Typical

### PORT TO PORT ISOLATION

700+850 to AWS EXT and 1900	60 dB min
1900 to 700+850	80 dB min
1900 to AWS EXT	60 dB min
AWS EXT to 700+850	80 dB min
AWS EXT to 1900	45 dB min (50 dB typical)

### PASSIVE INTERMODS

-153 dBc

### POWER HANDLING

200 W CW / Avg., 2.5 kW Peak

### DC / AISG PASS THRU (Optional)

Common Port to 700, 850 and 1900 Band Ports  
31V Max, 2A. Rated ASIG 2.0

Rev: 080819

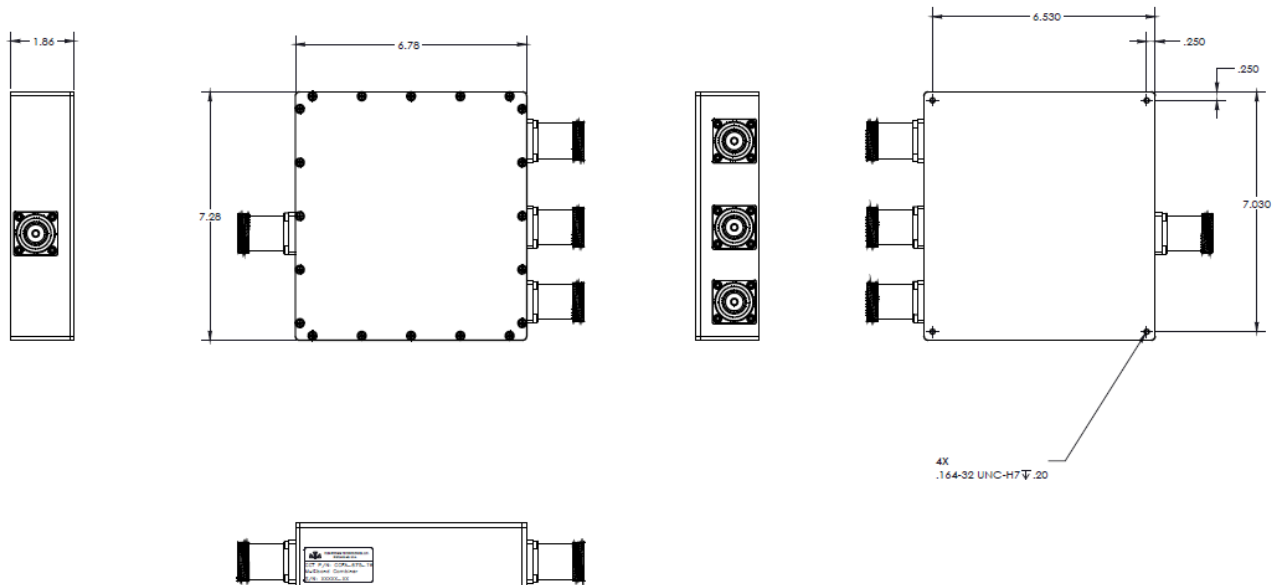
# Product Specification

## Environmental Specifications

OPERATING TEMPERATURE	-40°C to +65°C Operating
ENVIRONMENTAL	Per ETS-300
WEATHERIZATION	Per IP-65 (IP-67 Optional)
LIGHTNING PROTECTION	Per EN / IEC 61000 4-5, Level 4

## Mechanical Specifications

CONNECTORS	7/16 DIN Female - Long Neck Optional: 4.3/10.0, Type 'N'
SIZE	1.86" x 6.78" x 7.28" excluding connectors
WEIGHT	Approx. 6 lbs



### OUTLINE DRAWING

Rev: 080819