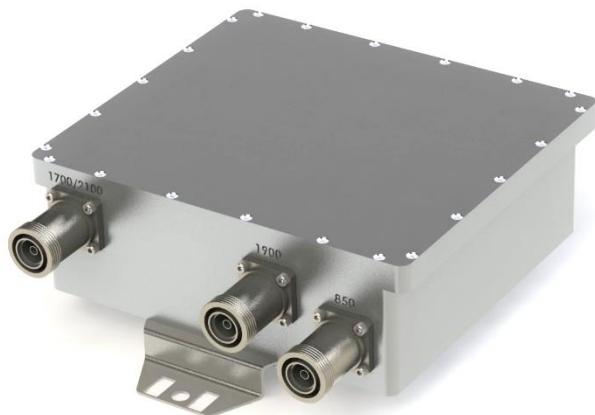


Product Specification



CCFA-332

Multiband Combiner (Triplexer)

- **Covers 800-850, 1900 and AWS Bands**
- **Low Loss / High Isolation**
- **Low PIM Device**
- **Stackable**

Electrical Specifications

PASSBAND

| | |
|-------------------------|-------------------------------|
| 800+850 BAND PORT | 806 - 894 MHz |
| AWS BAND PORT | 1710 - 1755 & 2110 - 2155 MHz |
| 1900 BAND PORT | 1850 - 1990 MHz |
| PASSBAND INSERTION LOSS | 0.3 dB Max. |
| PASSBAND RETURN LOSS | 20 dB Min. |
| PORT TO PORT REJECTION | |
| 800+850 BAND PORT | |
| 1710 - 2155 MHz | 75 dB Min. |
| AWS BAND PORT | |
| 894 AND BELOW | 75 dB Min. |
| 1850 - 1990 MHz | 75 dB Min. |
| 1900 BAND PORT | |
| 1755 MHz AND BELOW | 75 dB Min. |
| 2110 - 2155 MHz | 75 dB Min. |
| PASSIVE INTERMODS | -153 dBc |
| POWER HANDLING | 300 W CW / Avg, 3000 W Peak |

Rev: 080819

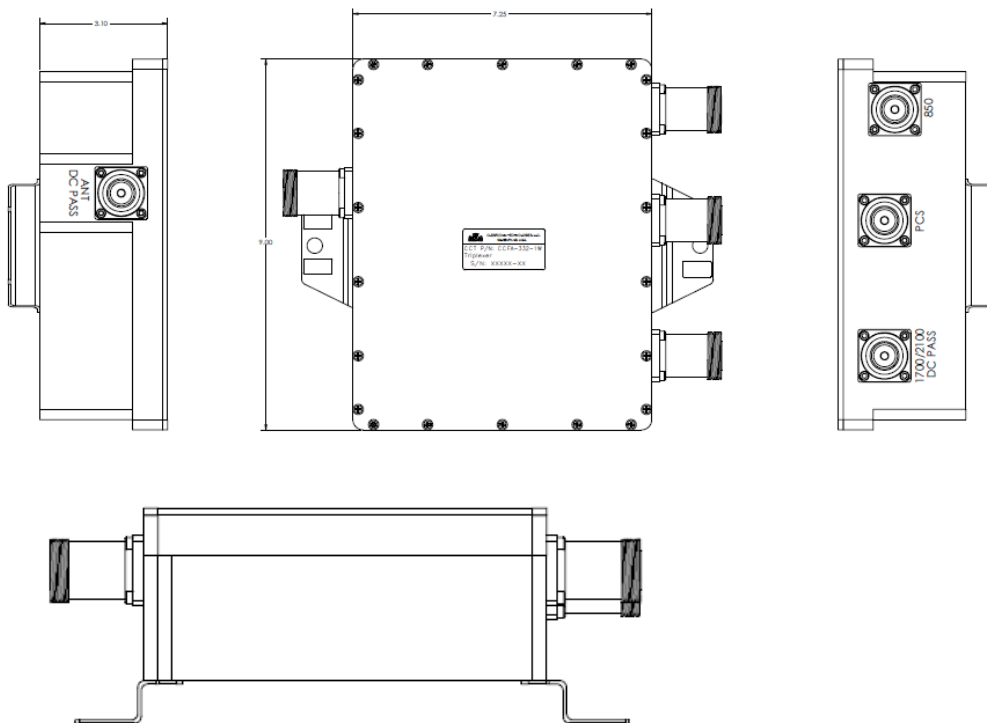
Product Specification

Environmental Specifications

| | |
|-----------------------|---------------------------------|
| OPERATING TEMPERATURE | -40° to +65° Operating |
| ENVIRONMENTAL | Per ETS-300 |
| WEATHERIZATION | Per IP-65 (IP-67 Optional) |
| LIGHTNING PROTECTION | Per EN / IEC 61000 4-5, Level 4 |

Mechanical Specifications

| | |
|------------|---|
| CONNECTORS | 7/16 DIN Female - Long Neck Optional: 4.3/10.0, Type 'N' |
| SIZE | 9.0" x 7.3" x 3.1" Excluding Connectors |
| WEIGHT | Approx. 8 lbs. |



OUTLINE DRAWING

Rev: 080819