

Product Specification



CCFA-776-XDW

In Band Combiner 850 LTE / CDMA

For 850 B Band Includes F8

Low Loss Combining

Connector Options – 4310 & 7/16 DIN

Several Mounting Options

Electrical Specifications

PASSBAND		
COMMON		835.91 - 894.00 MHz
CDMA PORT (F1-F2 UL)		835.91 - 838.36 MHz
(F8 UL)		847.49 - 848.71 MHz
(F1-F2 DL)		880.91 - 883.36 MHz
(F8 DL)		892.49 - 894.00 MHz
LTE PORT (20581 UL)		839.60 - 844.60 MHz
(2581 DL)		884.60 - 889.60 MHz
PASSBAND INSERTION LOSS		0.75 dB Typ. 1.1 dB Max.
PASSBAND RETURN LOSS		20 dB Min.
PORT TO PORT ISOLATION		30 dB Min.
GROUP DELAY		
CDMA Channel, any 1.23 MHz Band		120 nS Typ. 150 nS Max.
LTE Channel		<100 nS Typ. 150 nS Max.
POWER HANDLING		100 W CW / Avg. Per Port

Rev: 081619

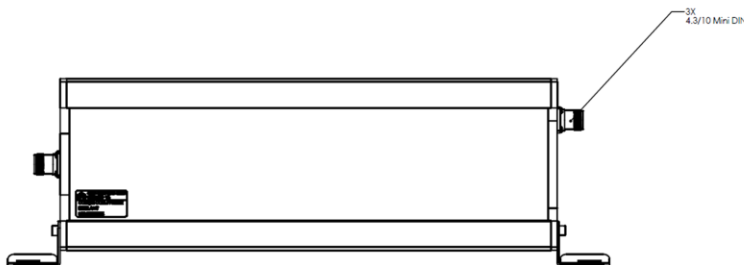
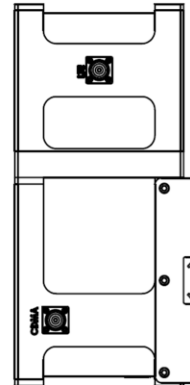
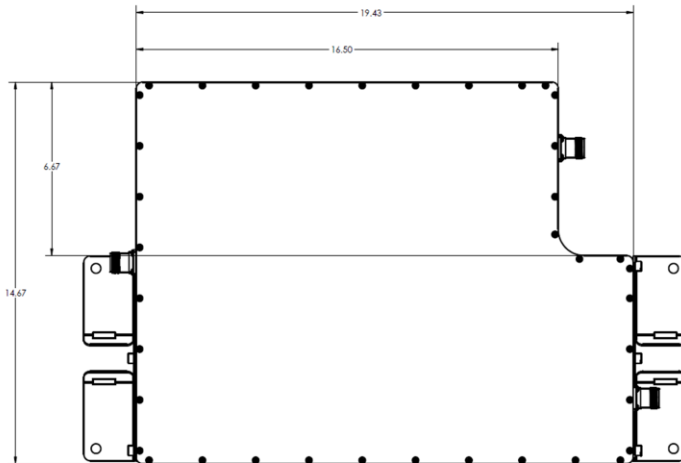
Product Specification

Environmental Specifications

OPERATING TEMPERATURE	-20° to +60°C Operating
ENVIRONMENTAL WEATHERIZATION	Per ETS-300
LIGHTNING PROTECTION	Per IP-65 (IP-67 Optional)
	Per EN / IEC 61000 4-5, Level 4

Mechanical Specifications

CONNECTORS	4.3/10.0 MiniDIN (Long Neck) Optional: 7/16 DIN, Type 'N'
SIZE	6.6" tall x 14.7" wide x 19.4" deep Excluding connectors
WEIGHT	Approx. 50 lbs.



OUTLINE DRAWING

Rev: 081619