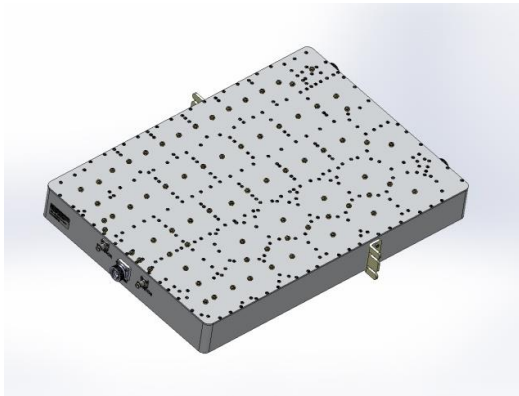


Product Specification



CCFA-400-1

850 A / B Band Combiner

- Low Loss Combining of 850 A&B**
- Connector Options – 7/16 DIN / 4310**
- Indoor and Weatherized Versions**
- Several Mounting Options**

Electrical Specifications

PASSBAND	
COMMON	824.27 – 893.72 MHz
A BAND PORT, F8-F1, LTE 2460	824.27-834.11 MHz & 869.27-879.11 MHz
B BAND PORT, F1-F8, LTE 2560	835.91-848.72 MHz & 880.91-893.72 MHz
PASSBAND INSERTION LOSS	1.2 dB Max.
PASSBAND FLATNESS	0.5 dB Max over any 1.23 MHz Band
PASSBAND RETURN LOSS	20 dB Min.
GROUP DELAY	400 nS Absolute Variation, Fullband 250 nS Max. Variation, Fullband 150 nS Max. Variation, any 1.23 MHz Band
PORT TO PORT ISOLATION	
Rx to Rx	30 dB Min.
Tx to Rx	60 dB Min.
Tx to Tx	30 dB Min.
STOPBAND REJECTION	
A and B BAND Rx	30 dB Min. from 851-851.6 MHz 35 dB Min. from 851.6-866 MHz
A and B BAND Tx	30 dB Min. from 896-901 MHz
PASSIVE INTERMODS	-153 dBc
POWER HANDLING (Tx PORT)	300 W CW / Avg. 6 kW Peak
MONITOR PORT	-50 dB

Rev: 080119

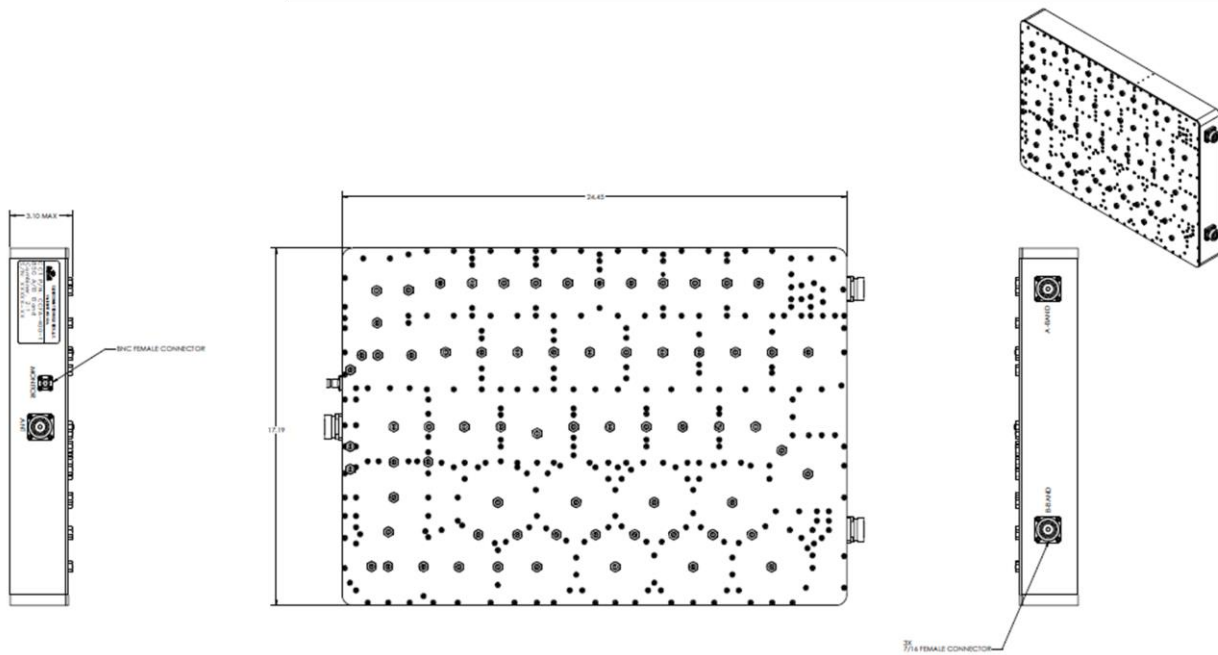
Product Specification

Environmental Specifications

OPERATING TEMPERATURE	-40° to +65°C Operating
ENVIRONMENTAL	Per ETS-300
WEATHERIZATION	Per IP-65 (IP-67 Optional)
LIGHTNING PROTECTION	Per EN / IEC 61000 4-5, Level 4

Mechanical Specifications

CONNECTORS	7/16 DIN Female, BNC Female on Monitor Port
SIZE	24.5" x 17.2" 3.1" Excluding connectors
WEIGHT	Approx.: 46 lbs.



OUTLINE DRAWING

Rev: 080119