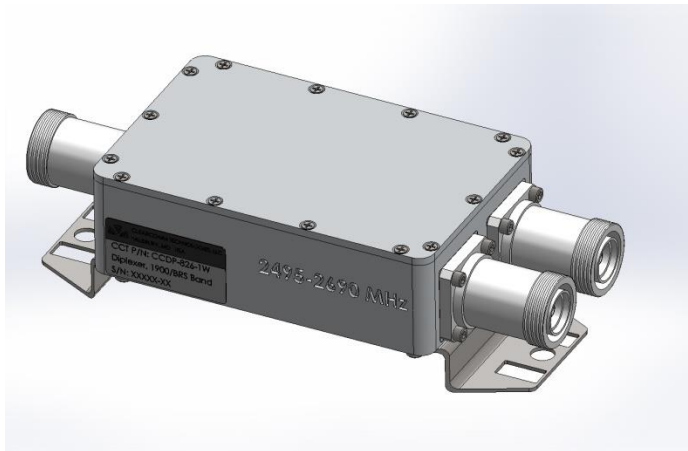


Product Specification



CCDP-844

1900 / WCS Diplexer

Combines 1900 and WCS Bands

Low Loss / High Isolation

Low PIM's -155 dBc

Weatherized to IP-67

Electrical Specifications

PASSBAND

1900 (PCS) PORT	1850 - 2000 MHz
2600 (BRS) PORT	2495 - 2690 MHz

INSERTION LOSS 0.7 dB Max. 0.5 dB Typical

RETURN LOSS 20 dB Min.

PORT TO PORT ISOLATION 60 dB Min.

PASSIVE INTERMODS -153 dBc

POWER HANDLING 200 W CW / Avg. Per Port
2 kW Peak

Environmental Specifications

OPERATING TEMPERATURE -20° to +60°C Operating

ENVIRONMENTAL Per ETS-300

WEATHERIZATION Per IP-65 (IP-67 Optional)

LIGHTNING PROTECTION Per EN / IEC 61000 4-5, Level 4

Rev: 080819

Product Specification



Mechanical Specifications

CONNECTORS

7/16 DIN Female Connectors (Long Neck)

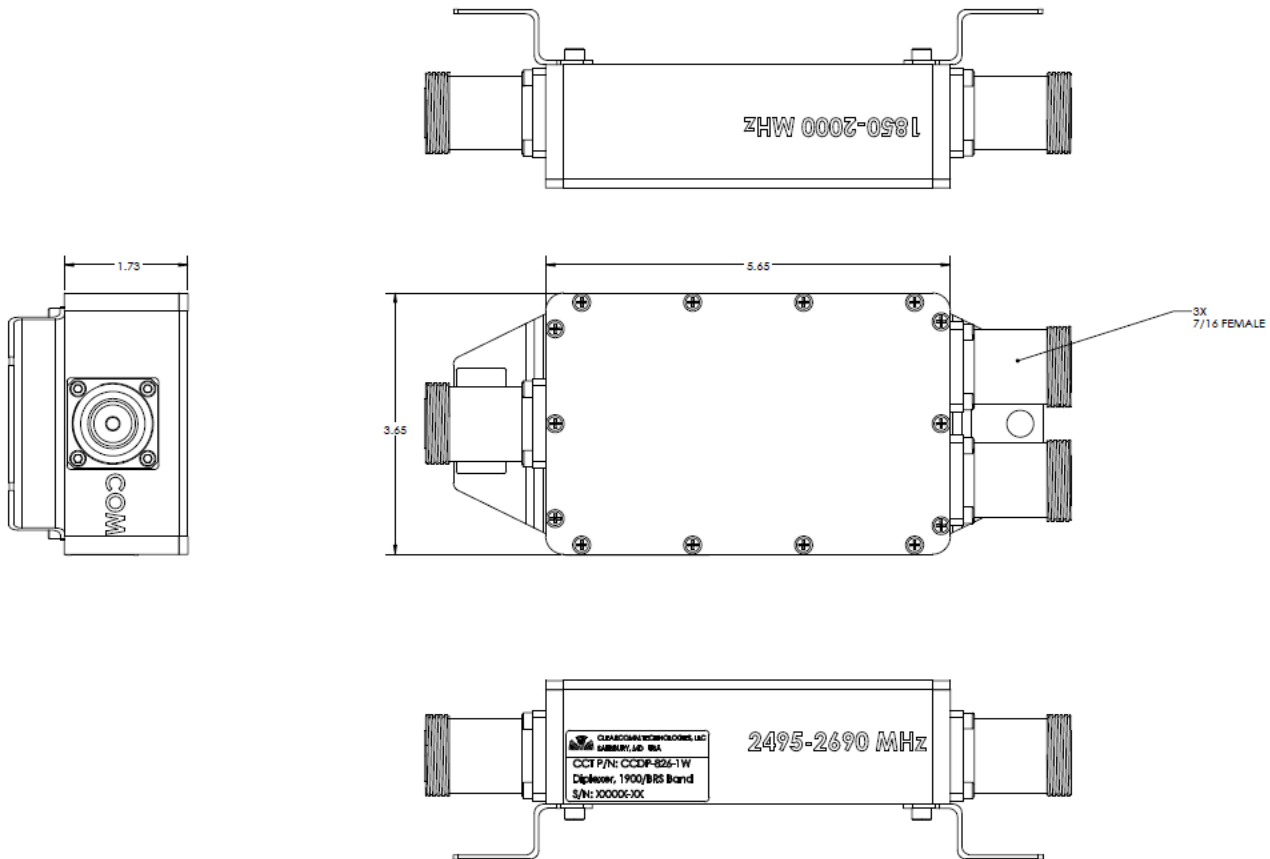
Optional: 4.3/10.0, Type 'N'

SIZE

6.77" x 3.68" x 1.85" Excluding connectors.

WEIGHT

Approx.: 4 lbs.



OUTLINE DRAWING

Rev: 080819