

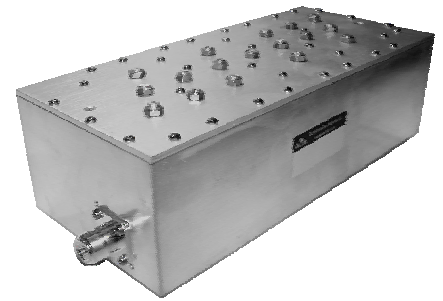


WIRELESS PRODUCTS

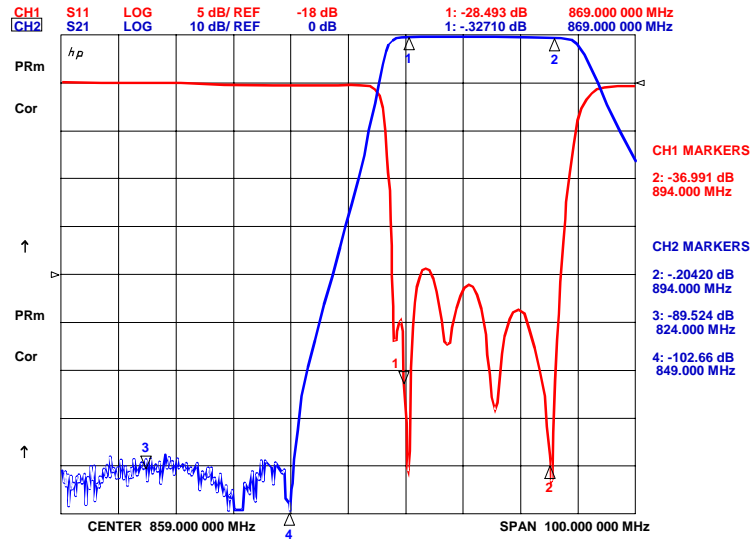
850 Band Transmit Filter

ClearComm Technologies' model number **CCTF-81** is a highly selective transmit band filter. It is designed to pass the full transmit band from 869 to 894 MHz with an insertion loss of 0.5 dB maximum. Attenuation of signals in the receive band of 824-849 MHz is over 75 dB. The unit has been specifically designed for high power applications. Power handling is 500 Watts average or CW and 10 kW peak. The approximate size of the unit is 9.6" x 4.9" x 3.0". Type 'N' female connectors are provided on the unit. Mounting options include rack mountable, ladder suspension as well as customized mechanical configurations. For requirements specific to your needs, please contact ClearComm Technologies, LLC.

PARAMETER	SPECIFICATION
PASSBAND	869 – 894 MHz
PASSBAND INSERTION LOSS	0.5 dB Max.
INSERTION LOSS VARIATION	0.2 dB Max.
PASSBAND RETURN LOSS	17 dB Min
REJECTION	
DC – 824 MHz	75 dB Min.
824 - 849 MHz	75 dB Min.
950 – 2000 MHz	75 dB Min.
PASSIVE INTERMODS (with two +43 dBm tones)	-110 dBm (as measured in Rx band)
POWER HANDLING	500 W Avg. / CW 10 kW Peak
OPERATING TEMPERATURE	0° to +60° C
CONNECTORS	Type 'N' Female
DIMENSIONS	9.6" x 4.9" x 3.0" (See Outline)
AVAILABLE OPTIONS	<ul style="list-style-type: none"> • Mounting, Tower, Cable tray, Ladder or Rack Mount Options Available



TYPICAL PERFORMANCE DATA



OUTLINE DIMENSIONS

