

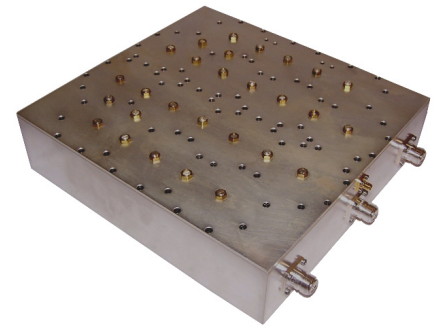


## WIRELESS PRODUCTS

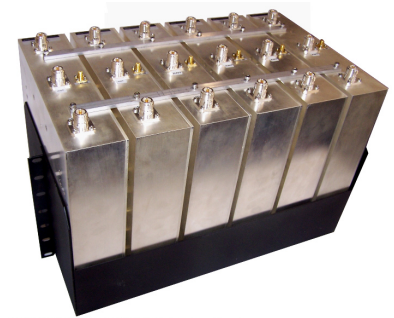
# 850 B Band Duplexer the 'SMR Stopper'

ClearComm Technologies' model number **CCFA-239** is an 850 B Band Duplexer assembly consisting of 6 pieces of the CCDP-621 on a 19" Rack Mount Tray. It offers low insertion loss combined with specific, out of band SMR rejection. The filter is designed to pass the receive and transmit portions of 850 B band. The receive channel provides more than 55 dB rejection from 851-866 MHz and the transmit channel greater than 30 dB rejection from 896 to 901 MHz. Isolation between receive and transmits bands is greater than 80 dB. Power handling is 800 Watts average or CW and 16 kW peak. Type 'N' female connectors are provided on the unit. A -40 dB Tx Monitor port is included. For requirements specific to your needs, please contact ClearComm Technologies, LLC.

| PARAMETER  | SPECIFICATION   |
|--|---|
| PASSBAND<br>RECEIVE<br>TRANSMIT  | 835 - 849 MHz<br>880 – 894 MHz                                  |
| PASSBAND INSERTION LOSS  | 1.5 dB Max.   |
| INSERTION LOSS VARIATION   | 1.0 dB Max.   |
| PASSBAND RETURN LOSS   | 18 dB Min.  |
| ISOLATION<br>TRANSMIT TO RECEIVE<br>RECEIVE TO TRANSMIT                          | 80 dB Min.<br>80 dB Min.  |
| REJECTION<br>ANT TO RECEIVE<br>851 – 866 MHz<br>TRANSMIT TO ANT<br>896 – 901 MHz | 55 dB Min.<br>30 dB Min   |
| PASSIVE INTERMODS<br>(with two +44 dBm tones)                                    | -110 dBm (as measured in Rx Band)                               |
| POWER HANDLING   | 800 W Avg. / CW<br>16 kW Peak                                   |
| MONITOR PORT (ANT)   | -40 dB $\pm$ 2.0 dB   |
| OPERATING TEMPERATURE  | 0° to +60° C  |
| CONNECTORS   | Type 'N' Female (ANT, Tx, Rx)<br>SMA Female (Monitor)           |
| DIMENSIONS   | Approx. 11" x 11" x 2.5" (CCDP-621)                             |
| MOUNTING   | 19" Rack Mount Assembly holds 6 pieces of the CCDP-621 Duplexer |



Picture of single Duplexer, CCDP-621



Picture of Duplexer Assembly, CCFA-239