

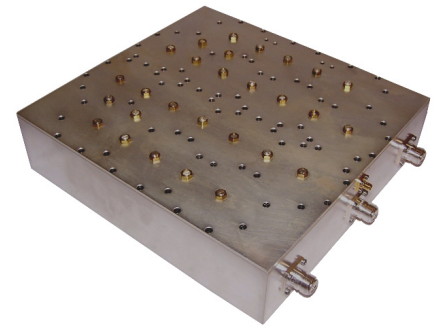


WIRELESS PRODUCTS

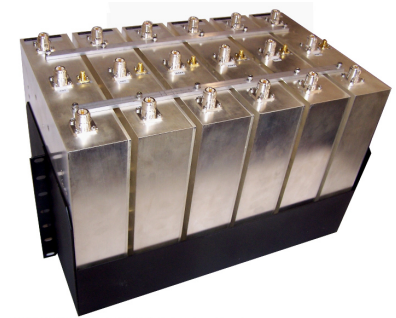
850 A Band Duplexer the 'SMR Stopper'

ClearComm Technologies' model number **CCFA-339-1** is an 850 A Band Duplexer assembly consisting of 6 pieces of the CCDP-631 on a 19" Rack Mount Tray. It offers low insertion loss combined with specific, out of band SMR rejection. The filter is designed to pass the receive and transmit portions of 850 A band. The receive channel provides more than 40 dB rejection from 851-866 MHz and the transmit channel greater than 40 dB rejection from 896 to 901 MHz. Isolation between receive and transmit bands is greater than 80 dB. Power handling is 800 Watts average or CW and 16 kW peak. Type 'N' female connectors are provided on the unit. A -40 dB Tx Monitor port is included. For requirements specific to your needs, please contact ClearComm Technologies, LLC.

PARAMETER	SPECIFICATION
PASSBAND RECEIVE TRANSMIT	824 – 846.5 MHz 869 – 891.5 MHz
PASSBAND INSERTION LOSS	1.5 dB Max.
INSERTION LOSS VARIATION	1.0 dB Max.
PASSBAND RETURN LOSS	18 dB Min.
ISOLATION TRANSMIT TO RECEIVE RECEIVE TO TRANSMIT	80 dB Min. 80 dB Min.
REJECTION ANT TO RECEIVE 851 – 866 MHz TRANSMIT TO ANT 865 MHz 896 – 901 MHz	40 dB Min. 40 dB Min 40 dB Min
PASSIVE INTERMODS (with two +44 dBm tones)	-110 dBm (as measured in Rx Band)
POWER HANDLING	800 W Avg. / CW 16 kW Peak
MONITOR PORT (ANT)	-40 dB ±2.0 dB
OPERATING TEMPERATURE	0° to +60° C
CONNECTORS	Type 'N' Female (ANT, Tx, Rx) SMA Female (Monitor)
DIMENSIONS	Approx. 11" x 11" x 2.5" (CCDP-631)
MOUNTING	19" Rack Mount Assembly holds 6 pieces of the CCDP-631 Duplexer



Picture of single Duplexer, CCDP-631



Picture of Duplexer Assembly, CCFA-339-1